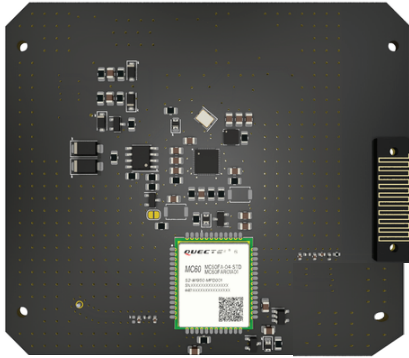


IOT



IoT is an advanced and value engineered hardware solution for the Internet- of-Things (IoT). It includes basic features such as GPS and accelerometer as well as advanced CAN communication protocol and over-the-air (OTA) updates. Additionally, it features intelligent onboard software algorithms for movement detection, crash detection, hard acceleration, hard braking, and hard turning. The solution also includes I/O support for remotely locking and unlocking vehicles. Furthermore, it includes I/O to sense battery voltage and support remote monitoring of the vehicle's health.

Specifications

- GSM
- 2G/ 4G Enabled
- GPS/GNSS
- 3 - Axis Accelerometer
- Input from 6 V to 40 V
- 2 digital and analog IO's each
- Low Power Consumption During Operation
- IP 67

Features

- Capturing critical vehicle information
- Crash detection
- Topple detection
- Movement detection
- Fault detection
- Remote tracking and Control

